

WTDX4

4x3pin & 4x2pin Way WonderTel Data Combo Xtra High

PRODUCT DESCRIPTION

The Wonder Tel Data Combo Xtra High range of High quality and High Level Mains Power, telephone lines and Network (LAN) Surge Protection. The Wonder Tel Data Range includes proprietary circuitry that checks the wiring in the socket it is plugged into and simultaneously checks for a good earthing of the premises that is required for any surge protector to be effective.

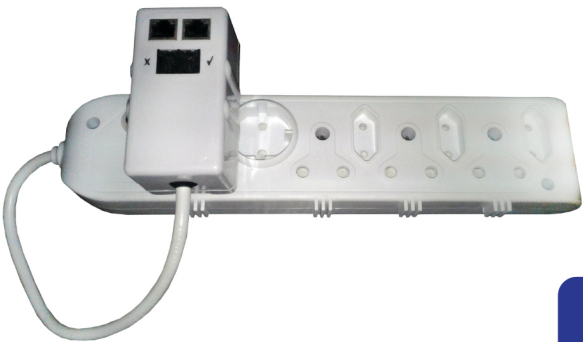


If the tick light is **ON**, then the surge protector is working and okay, but if it is **OFF**, then surge protector needs to be replaced



WARNING!
When the cross light is **ON**, the the wiring of the wall socket the surge protector is plugged into is faulty

PRODUCT PHOTO



FEATURES AND BENEFITS

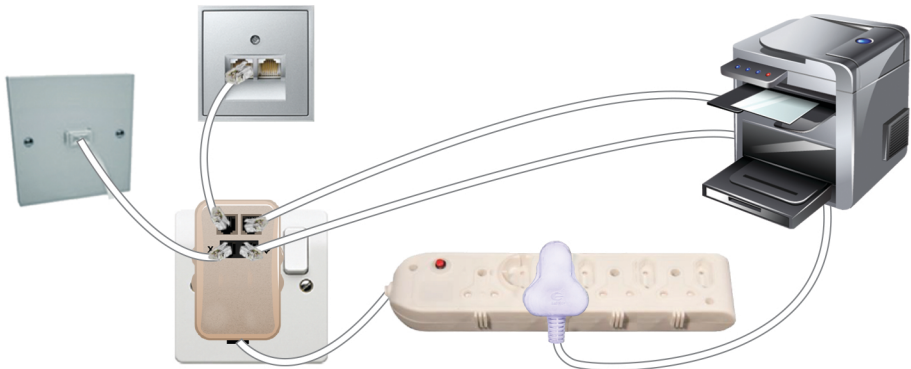
- Flame retardant - prevention from burning and causing of a fire
- Guaranteed - You won't need to buy another one in 2 years
- Insured - Your attached equipment is insured against lightning surge damage for 24 months (T&Cs Apply)

PRODUCT TECHNICAL DATA

Specifications	Ratings	Differential Mode	Common Mode
POWER: Input	230Vac 50Hz (10A max)		
Is (discharge current)		20kA (8/20μs)	20kA (8/20μs)
ts (Response time)	<25ns		
TEL: Operating Voltage	+/- 230v DC		
Is (discharge current)		10kA (96V residual)	10kA (96V residual)
ts (Response time)	<5ns		
Transfer rate	64kbite/s		
Input / Output	RJ11 Female Connector		
Protected Pair	2 lines		
DATA: Vmax	+/- 230V DC		
Input/Output	RJ45 Female Connector		
Protected Pairs	4 line/8 line options		
Is (discharge current)		10kA (58Vresidual)	10kAs (58Vresidual)
Ts (Response time)	<5ns		
DATA Speed	10/100/1000Mbit/s		
GENERAL: Temp.	-15 to 65 C		
Dimensions	60x70x100mm		
Compliance	SABS IEC 61000-4-5	UL 497B	SANS 164-0-4
Guarantee	Yes, 24 months		
Insured Warranty	Attached Equipment Warranty up to a max of R20 000. T's and C's apply		
Uses	Any electrical equipment that plugs into a SA 220Vac 16 Amp round socket outlet and makes use of Telkom lines, incl. ADSL and LAN		
Installation	Plug n Play. Simply plug into a standard wall socket, check the lights and connect your devices		

How to connect your plug:

Connect power cord to copy machine, the printer LAN line to the surge protector and the telephone line to the surge protector. Connect LAN line to copy machine and surge protector. Connect telephone line to copy machine and surge protector. Plug surge protector into wall socket.



POWER, NETWORK & TELEPHONE